

Founded in **1990**

The **1st** in Asia to have both UL and VDE accredited laboratories

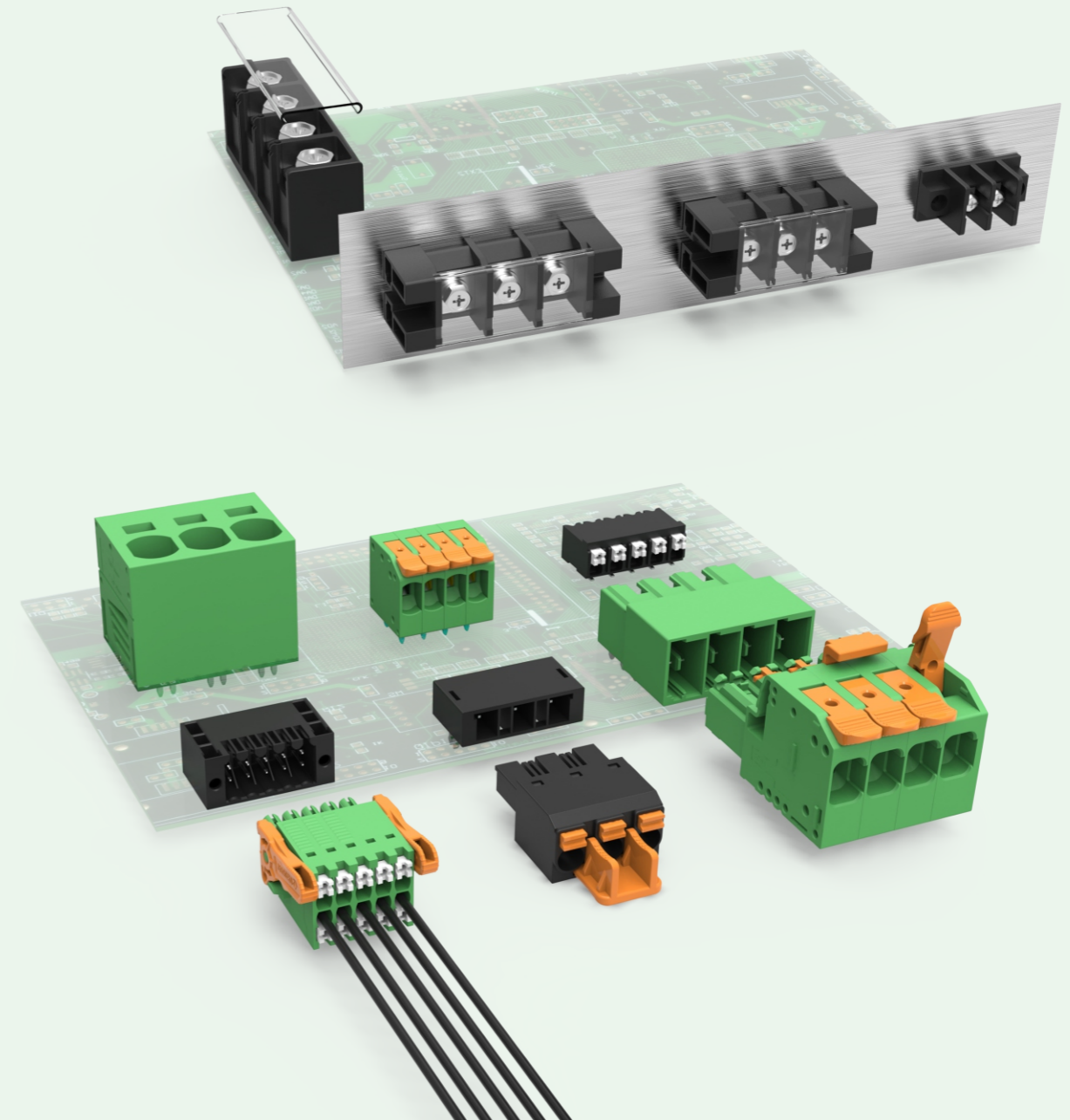
4 professional production sites

40000+ high quality products

100+ countries and territories covered

DEGSON-Global Industrial Connector Manufacturer,
Providing Customized Solution To All Partners.

For more information on products,
please visit the following websites:
www.degson.com



NINGBO DEGSON ELECTRICAL CO., LTD.

Add : No.1585.Xiaolin Road.Cixi.Ningbo China

P.C. : 315321

Tel : +86-574-63510770

E-mail : sale@degson.com



DEGSON website



Linked in

The catalog is only for reference, and the detail data must be based on our company's specification!

DCN 22-E01

Device Connectivity New Product Overview

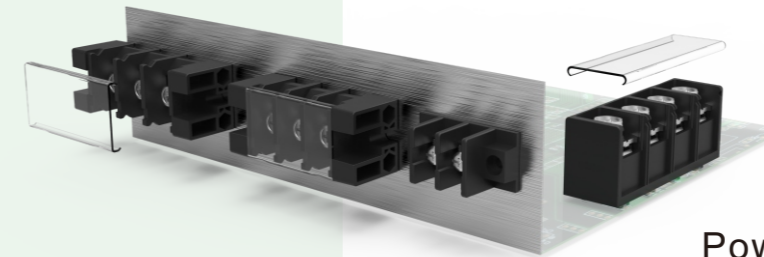
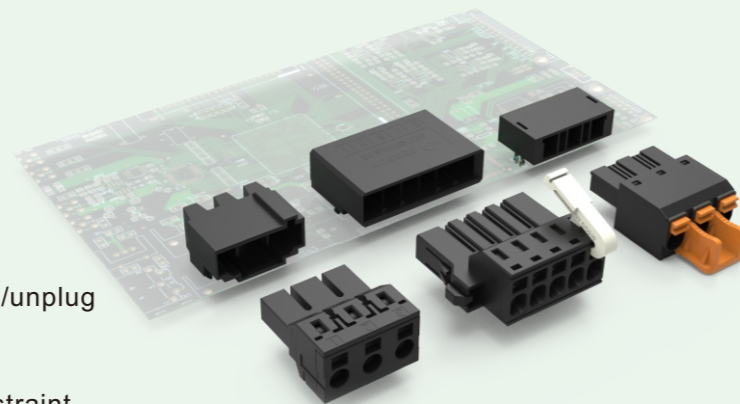
As a professional manufacturer of connectors, DEGSON focus on technological innovation, interpret excellence with professionalism, and strive to develop various new solutions for industrial automation, new energy, smart building and other industries, and provide safe, convenient and reliable connection in the field of signal, data and power transmission!

CONTENTS

Drive Connectors.....01-02
 Signal Connectors.....03-05
 Power Connectors.....06-09
 Smart Building Connectors.....10
 Ability and Service11-12

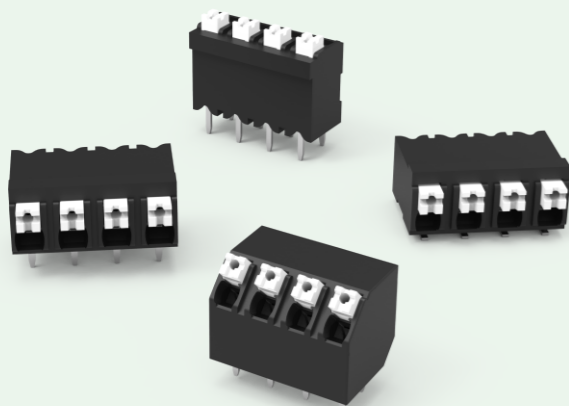
Drive Connectors

- With safe locking design , easy to plug/unplug and providing reliable connection.
- Different lock mechanism (side or top position) is available to meet size constraint and vibration requirement.



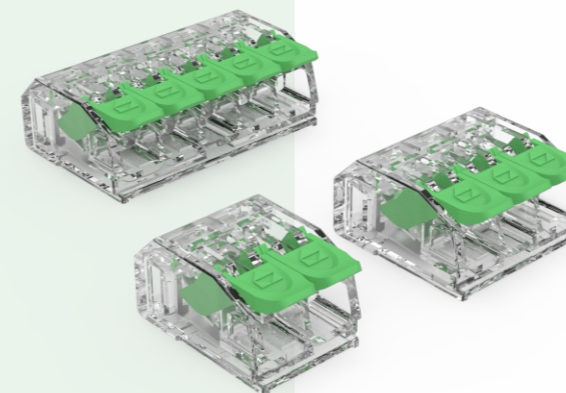
Power Connectors

- Rated current (up to 200A) to meet high-power device requirement.
- Original DLS(*Dual-Lever Spring*[®]) technology , realizing tool-free operation.
- Different configuration for PCB soldering process or Through-wall installation.



Signal Connectors

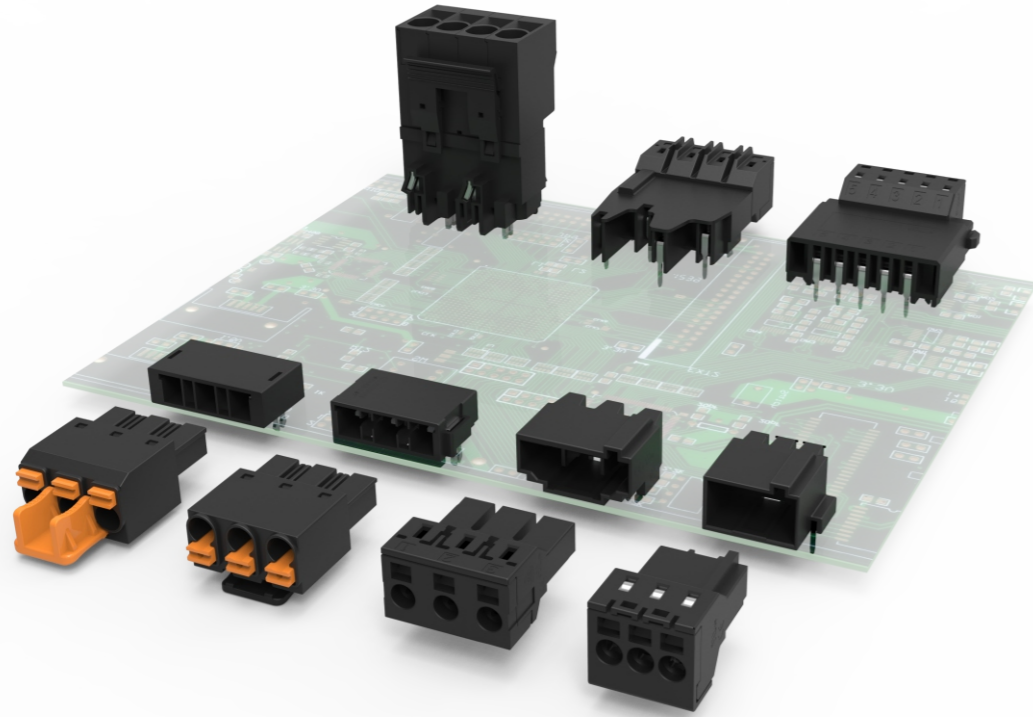
- Compact and high density(up to 48 poles), perfect for miniaturization and lightweight request.
- Suitable for THR and SMT soldering process.



Smart Building Connectors

- Compact size, enabling more flexibility and more connection in same space.
- Simplified design and high quality, providing easier and safer installation.

Device Driving Connectors- Servo connectors (9EDG Series)



Main features

- Self-locking function, locking acoustical alert, safe to use and reliable connection
- Spring-cage and innovative PUSH-IN spring wire termination are optional to meet different operating habits of customers
- Fixed foot structure of the socket greatly reduces the fault rate of operation
- Different locking structures are suitable for different device size requirements

Side Lock Series

Picture	Product family	Notes	No. of pole	Pitch(mm)	Current(A)	Voltage(V)	Connection direction	Connection technology	Approvals
	9EDGKG-5.08	with side locking system	5, 6	5.08	16 IEC 14.5 UL (B) 10 UL (D)	160 IEC 300 UL (B) 300 UL (D)	/	Spring-cage connection	/
	9EDGRN-5.08	PCB header	5, 6	5.08	16 IEC 14.5 UL (B) 10 UL (D)	160 IEC 300 UL (B) 300 UL (D)	0°	/	/

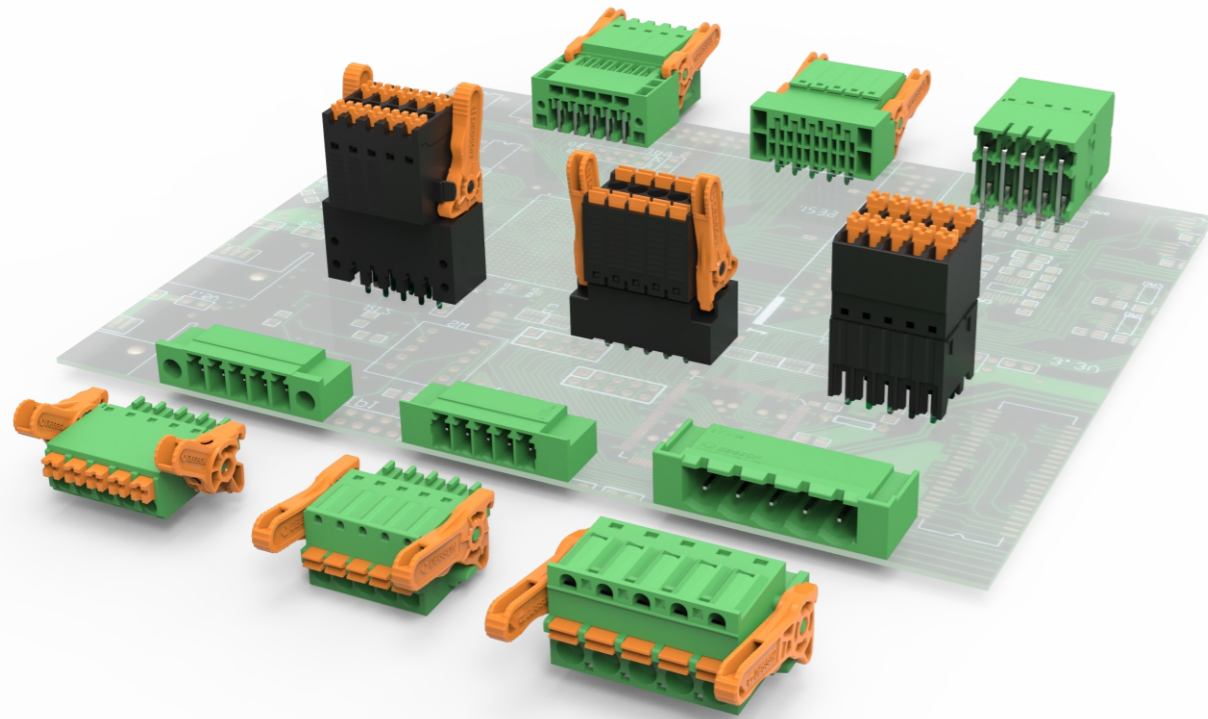
Push-pull Series

Picture	Product family	Notes	No. of pole	Pitch(mm)	Current(A)	Voltage(V)	Connection direction	Connection technology	Approvals
	9EDGKP-7.62	with push-pull locking system	3, 6	7.62	20A IEC 20A UL(B,C)	630 IEC 600 UL(B,C)	/	Push-in spring connection	/
	9EDGRP-7.62	PCB header	3, 6	7.62	20 IEC 20 UL(C) 5 UL(D) 20 UL(F)	630 IEC 300 UL(C) 600 UL(D) 600 UL(F)	0°	/	/

Center Lock Series

Picture	Product family	Notes	No. of pole	Pitch(mm)	Current(A)	Voltage(V)	Connection direction	Connection technology	Approvals
	9EDGK-5.0	PCB plug	2-14	5.0	20 IEC 14.5 UL (B) 10 UL (D)	320 IEC 300 UL (B) 300 UL (D)	/	Spring-cage connection	UL
	9EDGRC-5.0	PCB header	2-14	5.0	20 IEC 14.5 UL (B) 10 UL (D)	320 IEC 300 UL (B) 300 UL (D)	0°	/	UL
	9EDGK-7.5	PCB plug	2-12	7.5	20 IEC 16 UL (B,C) 5 UL (D)	630 IEC 300 UL (B,C) 600 UL (D)	/	Spring-cage connection	UL,VDE
	9EDGRC-7.5	PCB header	2-12	7.5	20 IEC 16 UL (B,C) 5 UL (D)	630 IEC 300 UL (B,C) 600 UL (D)	0°	/	UL,VDE
	9EDGKH-7.5	PCB plug	4	7.5	20 IEC 16 UL (B,C)	1000 IEC 600 UL (B,C)	/	Spring-cage connection	UL,VDE
	9EDGRH-7.5	PCB header Zigzag pinning W	4	7.5	20 IEC 16 UL (B,C)	1000 IEC 600 UL (B,C)	0°	/	UL,VDE
	9EDGKHB-7.5	PCB plug	4	7.5	41 IEC 35 UL (B)	1000 IEC 600 UL (B)	/	Push-in spring connection	/
	9EDGVHB-7.5	PCB header Zigzag pinning W	4	7.5	41 IEC 35 UL (B)	1000 IEC 600 UL (B)	90°	/	/
	9EDGKD-7.62	with center locking system	3, 6	7.62	20A IEC 20A UL(B,C)	630 IEC 600 UL (B,C)	/	Push-in spring connection	/
	9EDGRB-7.62	PCB header	3, 6	7.62	20 IEC 20 UL(C) 5 UL(D) 20 UL(F)	630 IEC 300 UL(C) 600 UL(D) 600 UL(F)	0°	/	/

Signal Connectors- High density connectors (15EDG, 2EDG Series)

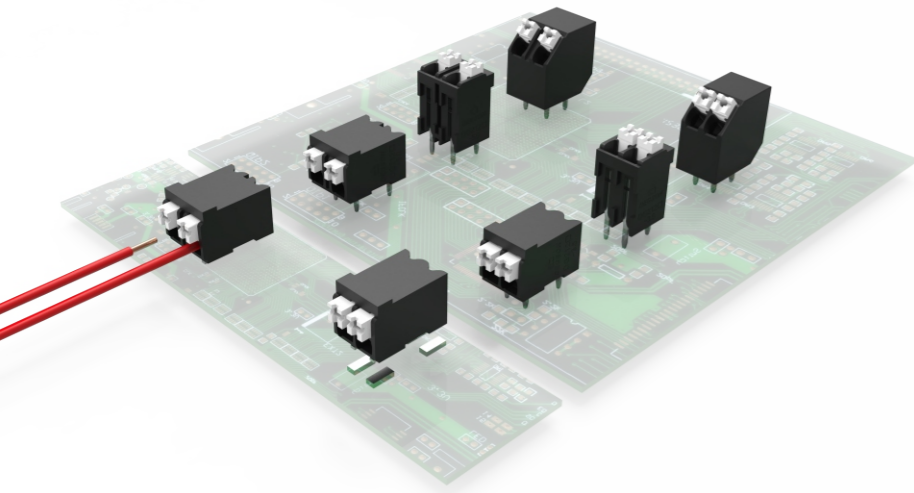


Main features

- PUSH-IN spring connection technology for fast wiring, reducing the wiring time and costs
- High density structure from single to double layer, to meet the compact wiring for equipment miniaturization
- Rich product portfolio, varieties flange structures are used for different applications
- With function of mis plug-proof, preventing the mis-insertion between two or more products with the same poles

Picture	Product family	Notes	No. of pole	Pitch(mm)	Current(A)	Voltage(V)	Connection direction	Connection technology	Approvals
	15EDGKNNHC-3.5	High density PCB plug	04-48	3.5	8 IEC 8 UL (B,D)	160 IEC 300 UL(B,D)	/	Push-in spring connection	/
	15EDGRHB-THR-3.5	PCB header, THR soldering	04-48	3.5	8 IEC 8 UL (B,D)	160 IEC 300 UL(B,D)	0°	/	UL, VDE
	15EDGKNHG-3.5	High density PCB plug with lock-and-release locking system	04-48	3.5	9.5 IEC 8 UL (B)	250 IEC 300 UL(B)	/	Push-in spring connection	UL, VDE
	15EDGRHCM-THR-3.5	PCB header, THR soldering	04-48	3.5	9.5 IEC 8 UL (B,C)	250 IEC 150 UL (B) 50 UL (C)	0°	/	UL, VDE
	15EDGVHCM-THR-3.5	PCB header, THR soldering	04-48	3.5	9.5 IEC 8 UL (B,C)	250 IEC 300 UL (B) 50 UL (C)	90°	/	UL, VDE
	15EDGKNHBG-3.5	High density PCB plug with lock-and-release locking system	04-48	3.5	10 IEC UL(B,D)	160 IEC 300 UL(B,D)	/	Push-in spring connection	UL, VDE
	15EDGRHDM-3.5	PCB header	04-48	3.5	10 IEC UL (B)	125 IEC 1500 UL(B)	0°	/	UL, VDE
	15EDGVHDM-3.5	PCB header	04-48	3.5	10 IEC UL (B)	125 IEC 1500 UL(B)	90°	/	UL, VDE
	15EDGKNG-3.5	Compact PCB plug with latching flange	02-20	3.5	8 IEC 8 UL (B)	250 IEC 300 UL(B,D)	/	Push-in spring connection	UL, VDE
	15EDGRN-3.5	PCB header	02-20	3.5	8 IEC 8 UL (B,C)	250 IEC 300 UL (B)	0°	/	UL, VDE
	15EDGKNGB-3.81	Compact PCB plug with lock-and-release locking system	02-20	3.81	8 IEC 8 UL (B,D)	250 IEC 300 UL (B,D)	/	Push-in spring connection	UL
	15EDGRMG-3.81	PCB header	02-20	3.81	8 IEC 8 UL (B,D)	250 IEC 300 UL (B,D)	0°	/	UL
	2EDGKDBG-5.08	PCB plug with lock-and-release locking system	02-12	5.08	20 IEC 10 UL (B,D)	320 IEC 300 UL (B,D)	/	Push-in spring connection	/
	2EDGVMG-5.08	PCB header	02-12	5.08	20 IEC 15 UL (B) 10 UL (D)	320 IEC 300 UL (B,D)	90°	/	/
	15EDGKDBG-3.5	PCB plug with lock-and-release locking system	02-12	3.5	7 IEC 8 UL (B,C,D)	250 IEC 300 UL (B,C,D)	/	Push-in spring connection	/
	15EDGVMG-3.5	PCB header	02-12	3.5	7 IEC 8 UL (B,D)	250 IEC 300 UL (B,D)	90°	/	/

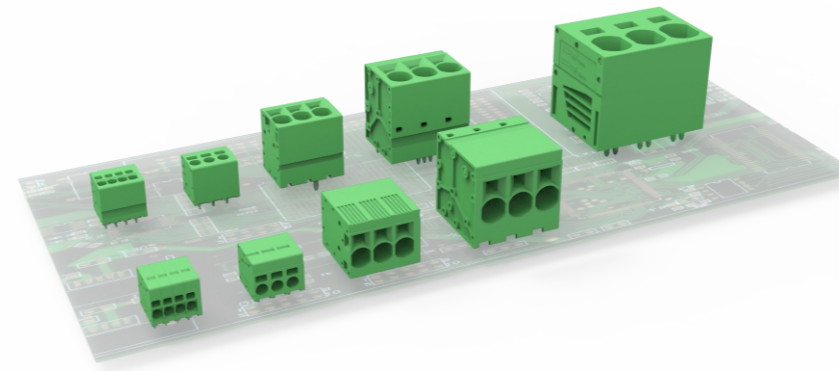
Signal Connectors- Compact terminal blocks (DG212 Series)



Main features

- PUSH-IN spring connection technology for fast wiring, reducing the wiring time and costs
- Compact structure, saving the installation space of equipment
- Suitable for SMT and THR soldering process

Power Connectors- Push-in terminal blocks (DG271 Series)



Main features

- PUSH-IN spring connection technology, for high performance compact equipment
- Full range of pitch products, support two wiring angles, wide application
- Cross section up to 35mm² (2 AWG), rated current up to 125A

THR Series

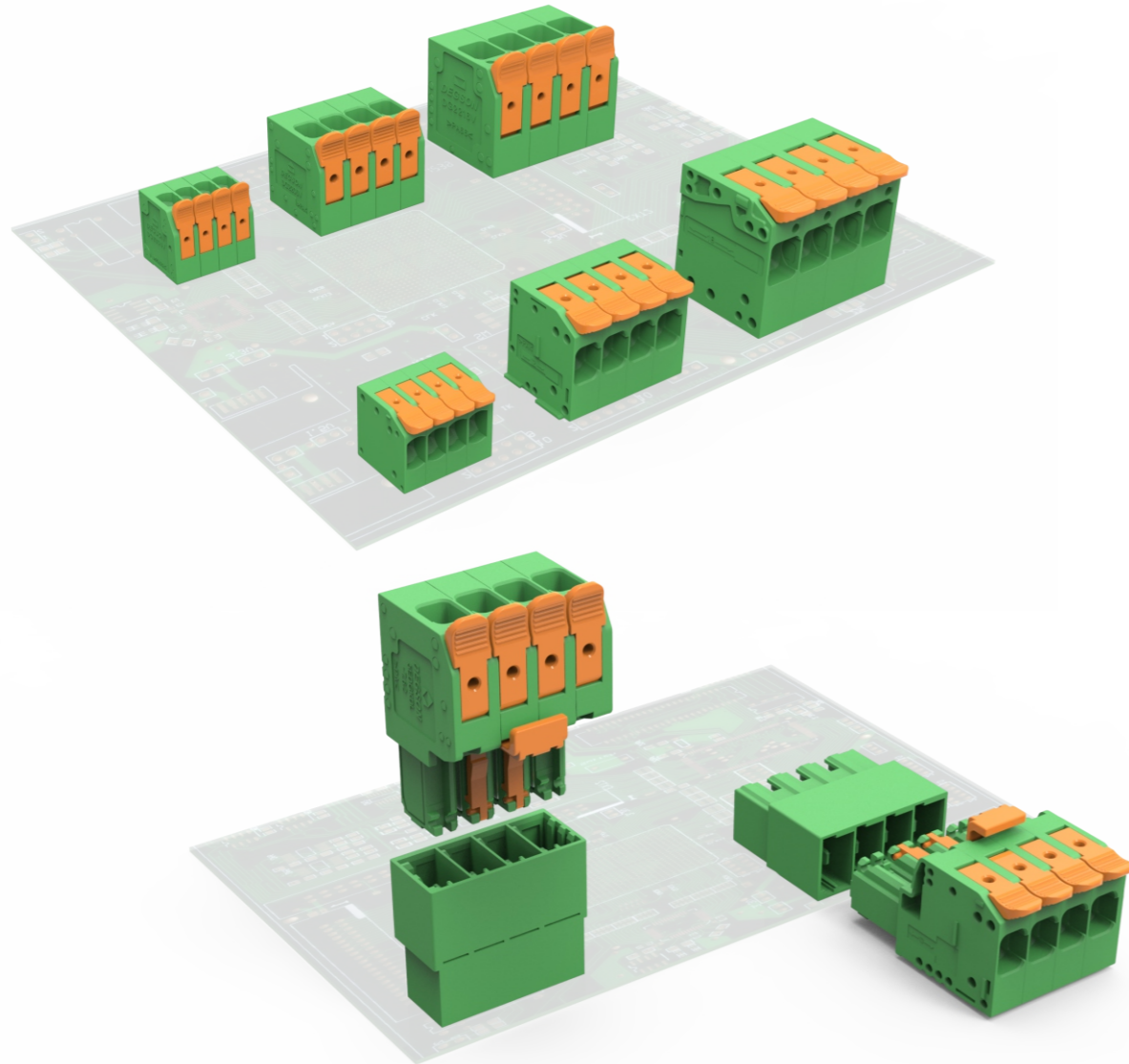
Picture	Product family	Notes	No. of pole	Pitch(mm)	Current(A)	Voltage(V)	Connection direction	Connection technology	Approvals
	DG212V-THR-3.5	THR and Wave soldering	2-24	3.5	17.5 IEC 12 UL (B) 10 UL (D)	200 IEC 300 UL (B) 300 UL (D)	90°	Push-in spring connection	UL, VDE
	DG212R-THR-3.5	THR and Wave soldering	2-24	3.5	17.5 IEC 12 UL (B) 10 UL (D)	200 IEC 300 UL (B) 300 UL (D)	0°	Push-in spring connection	UL, VDE
	DG212S-THR-3.5	THR and Wave soldering	2-24	3.5	17.5 IEC 12 UL (B) 10 UL (D)	160 IEC 300 UL (B) 300 UL (D)	45°	Push-in spring connection	UL
	DG212V-THR-5.0	THR and Wave soldering	2-24	5.0	17.5 IEC 12 UL (B) 10 UL (D)	320 IEC 300 UL (B) 300 UL (D)	90°	Push-in spring connection	UL, VDE
	DG212R-THR-5.0	THR and Wave soldering	2-24	5.0	17.5 IEC 12 UL (B) 10 UL (D)	320 IEC 300 UL (B) 300 UL (D)	0°	Push-in spring connection	UL, VDE
	DG212S-THR-5.0	THR and Wave soldering	2-24	5.0	17.5 IEC 12 UL (B) 10 UL (D)	320 IEC 300 UL (B) 300 UL (D)	45°	Push-in spring connection	UL, VDE

SMT Series

Picture	Product family	Notes	No. of pole	Pitch(mm)	Current(A)	Voltage(V)	Connection direction	Connection technology	Approvals
	DG212R-THR-3.5(150R)	SMT soldering	2-4	3.5	17.5 IEC 12 UL (B)	160 IEC 300 UL (B)	0°	Push-in spring connection	UL, VDE
	DG212R-THR-5.0(50R)	SMT soldering	2-4	5.0	17.5 IEC 12 UL (B) 10 UL (D)	320 IEC 300 UL (B) 300 UL (D)	0°	Push-in spring connection	UL, VDE

Picture	Product family	Notes	No. of pole	Pitch(mm)	Current(A)	Voltage(V)	Connection direction	Connection technology	Approvals
	DG271V-3.5	Linear double pinning	1-24	3.5	17.5 IEC 10 UL (B)	200 IEC 300 UL (B)	90°	Push-in spring connection	UL
	DG271R-3.5	Linear double pinning	1-24	3.5	17.5 IEC 10 UL (B)	200 IEC 300 UL (B)	0°	Push-in spring connection	UL
	DG271V-5.0	Linear double pinning	1-24	5.0	24 IEC 20 UL (B) 10 UL (D)	400 IEC 300 UL (B) 300 UL (D)	90°	Push-in spring connection	UL, VDE
	DG271R-5.0	Linear double pinning	1-24	5.0	24 IEC 20 UL (B) 10 UL (D)	400 IEC 300 UL (B) 300 UL (D)	0°	Push-in spring connection	UL, VDE
	DG271V-7.5	Zigzag pinning W	1-24	7.5	41 IEC 40 UL (B) 40 UL (C) 10 UL (D)	1000 IEC 300 UL (B) 150 UL (C) 300 UL (D)	90°	Push-in spring connection	UL, VDE
	DG271R-7.5	Zigzag pinning W	1-24	7.5	41 IEC 40 UL (B) 40 UL (C) 10 UL (D)	1000 IEC 300 UL (B) 150 UL (C) 300 UL (D)	0°	Push-in spring connection	UL, VDE
	DG271V-10.0	Zigzag pinning W	2-24	10	76 IEC 70 UL (B, C) 5 UL (D)	1000 IEC 600 UL (B, C) 600 UL (D)	90°	Push-in spring connection	UL, VDE
	DG271R-10.0	Zigzag pinning W	2-24	10	76 IEC 70 UL (B, C) 5 UL (D)	1000 IEC 600 UL (B, C) 600 UL (D)	0°	Push-in spring connection	UL, VDE
	DG271V-15.0	Linear double pinning	1-6	15.0	125 IEC 101 UL (B, C)	1000 IEC 600 UL (B, C)	90°	Push-in spring connection	/


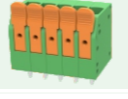





Power Connectors- Tool less connectors (*Dual-Lever Spring*[®])




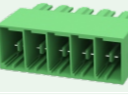

Main features

- Comfortable and labor-saving *Dual-Lever Spring*[®] technology, fast wiring and tool free
- Pluggable and PCB type, support two wiring angles, wide application
- Independent test holes available, quick and convenient testing

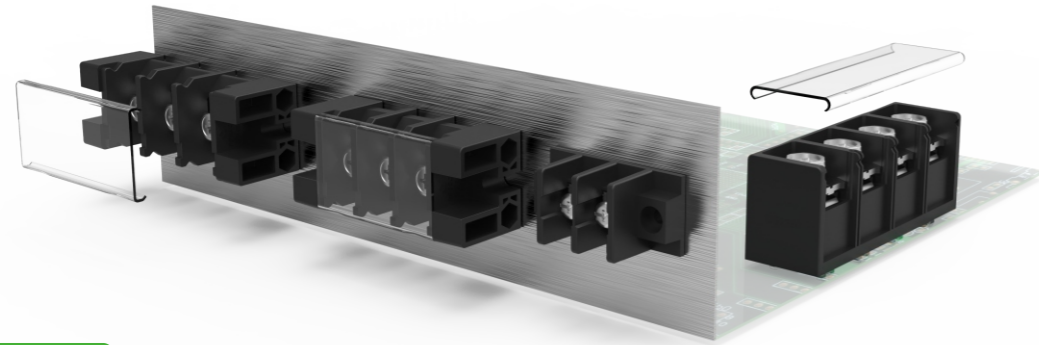
PCB Terminal Blocks

Picture	Product family	Notes	No. of pole	Pitch(mm)	Current(A)	Voltage(V)	Connection direction	Connection technology	Approvals
	DG2204R-5.0	With operation lever	1-12	5	32 IEC 20 UL (B) 10 UL (D)	400 IEC 300 UL (B) 300 UL (D)	0°	Push-in spring connection	UL,VDE
	DG2204V-5.0	With operation lever	1-12	5	32 IEC 20 UL (B) 10 UL (D)	400 IEC 300 UL (B) 300 UL (D)	90°	Push-in spring connection	UL,VDE
	DG2206R-7.5	With operation lever Zigzag pinning W	1-12	7.5	41 IEC 41 UL (B) 41 UL (C) 5 UL (D)	1000 IEC 600 UL (B) 600 UL (C) 600 UL (D)	0°	Push-in spring connection	UL,VDE
	DG2206V-7.5	With operation lever Zigzag pinning W	1-12	7.5	41 IEC 41 UL (B) 41 UL (C) 5 UL (D)	1000 IEC 600 UL (B) 600 UL (C) 600 UL (D)	90°	Push-in spring connection	UL,VDE
	DG2216R-10.0	With operation lever Zigzag pinning W	1-12	10	76 IEC 66 UL (B) 66 UL (C) 5 UL (D)	1000 IEC 600 UL (B) 600 UL (C) 600 UL (D)	0°	Push-in spring connection	UL,VDE
	DG2216V-10.0	With operation lever Zigzag pinning W	1-12	10	76 IEC 66 UL (B) 66 UL (C) 5 UL (D)	1000 IEC 600 UL (B) 600 UL (C) 600 UL (D)	90°	Push-in spring connection	UL,VDE
	DG2216R-15.0	With operation lever Zigzag pinning W	1-12	15	76 IEC 66 UL (B) 66 UL (C) 5 UL (D)	1000 IEC 600 UL (B) 600 UL (C) 600 UL (D)	0°	Push-in spring connection	/

PCB Connectors

Picture	Product family	Notes	No. of pole	Pitch(mm)	Current(A)	Voltage(V)	Connection direction	Connection technology	Approvals
	5EDGKDL-7.62	PCB plug with operation lever	2-12	7.62	41 IEC 42 UL (B) 5 UL (D)	1000 IEC 600 UL (B) 600 UL (D)	/	Push-in spring connection	UL,VDE
	5EDGRL-7.62	PCB header	2-12	7.62	41 IEC 42 UL (B) 5 UL (D)	630 IEC 300 UL (B) 600 UL (D)	0°	/	UL,VDE
	5EDGVL-7.62	PCB header	2-12	7.62	41 IEC 42 UL (B) 5 UL (D)	630 IEC 300 UL (B) 600 UL (D)	90°	/	UL,VDE

Power Connectors- Barrier terminal blocks (High Current Series)



Main features

- Feed-through structure can efficiently solve the problem of electrical transmission between internal and external equipment
- Spliced structure is more convenient for stocking , faster delivery of samples and orders
- Providing multiple value-added services, including with cover structure to prevent dust , label for printing word , help customer solve the problem of wiring confusion

Barrier Series

Picture	Product family	Notes	No. of pole	Pitch(mm)	Current(A)	Voltage(V)	Connection direction	Connection technology	Approvals
	DG30-A	Feed through structure, panel mounting	2-10	13	40 UL (B) 5 UL (D)	600 UL (B,C) 600 UL (D)	90°	Screw connection	UL
	DG75-A	Feed through structure, panel mounting	1-10	16	75 UL (B) 5 UL (D)	600 UL (B,C) 600 UL (D)	90°	Screw connection	UL
	DG100-A	Feed through structure, panel mounting	1-10	21	100 UL (B,C) 5 UL (D)	600 UL (B,C) 600 UL (D)	90°	Screw connection	UL
	DG150-A- under development	Feed through structure, panel mounting	1-5	27.0	150 UL (B,C) 5 UL (D)	1000 UL (B,C) 1000 UL (D)	90°	Screw connection	UL
	DG200-A- under development	Feed through structure, panel mounting	1-5	31.0	200 UL (B,C) 5 UL (D)	1000 UL (B,C) 1000 UL (D)	90°	Screw connection	UL
	DG2350	High current design, rotating cover for dust prevention	2-6	23.5	120 UL (B,C) 5 UL (D)	600 UL (B,C) 600 UL (D)	180°	Screw connection	UL

Smart Building Connectors- Construction and installation terminal blocks (DGBSC, DG220 Series)



Main features

- Suitable for connection of all types of conductors, safe and reliable connection
- With operation lever, easy to use and tool free
- Transparent housing, Direct visual inspection of wiring status, suitable for field wiring
- Independent test holes available, quick and convenient testing

DGBSC Series

Picture	Product family	Notes	No. of pole	Pitch(mm)	Current(A)	Voltage(V)	Connection direction	Connection technology	Approvals
	DGBSC-SG01/4-02P	Wire Connector	2	5.6	32 IEC	450 IEC 600 UL	/	Push-in spring connection	UL,VDE
	DGBSC-SG01/4-03P	Wire Connector	3	5.6	32 IEC	450 IEC 600 UL	/	Push-in spring connection	UL,VDE
	DGBSC-SG01/4-05P	Wire Connector	5	5.6	32 IEC	450 IEC 600 UL	/	Push-in spring connection	UL,VDE

DG220 Series

Picture	Product family	Notes	No. of pole	Pitch(mm)	Current(A)	Voltage(V)	Connection direction	Connection technology	Approvals
	DG220A	Micro wire connector	4,8	2.1	13.5 IEC	130 IEC 150 UL	/	Push-in spring connection	UL,VDE
	DG220B	Multi layer splicing for KNX	2,4,8	2.1	6 IEC 7 UL	320 IEC 150 UL	/	Push-in spring connection	UL,VDE
	DG220J	Conductive solder pin	1	/	/	/	/	/	/

Professional Ability

Value-added services

In order to meet the individual needs of customers, we can provide value-added services such as printing, colors, and empty space etc.

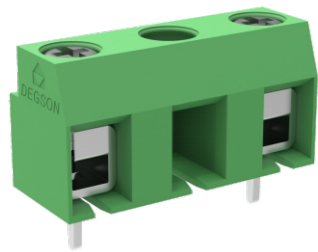
Color

Multiple colors can be selected and combined



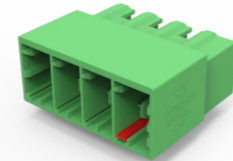
Printing

Individual printing



Space

Increasing the safety distance through the empty space and clapboard

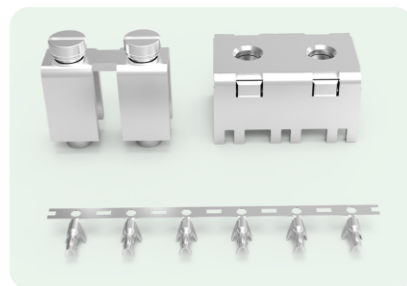


Coding star

Preventing the wrong insertion through the coding stars

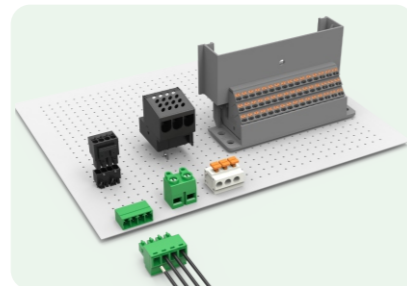
Customized development

According to the different application scenarios and industry needs, we can provide the professional customized solutions for customers.



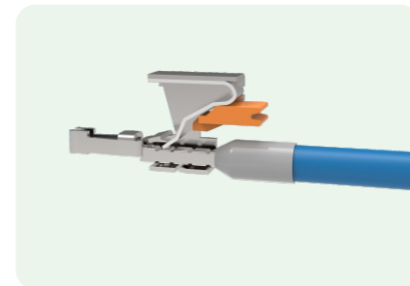
Metal parts

Different sizes and current can be customized



Connector

Different product structures including PCB type, pluggable type and barrier type can be customized



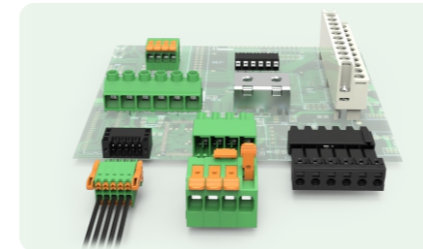
Connection technology

Multiple connection technology including screw and spring type can be customized

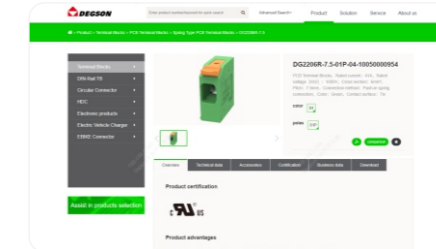
Excellent Service

Diversified and simple product selection

More than 40000 product specifications are applied in more than 10 industries, easy to find the suitable solutions.



Rich product types and complete certification



Online product selection and datasheet download



Online and offline 24h FAQs

Fast delivery

90% of universal products are achieved automatic assembly, sufficient safety stock has been established for 60% of standing product.



Automatic production line integrating assembly, inspection and packaging



Intelligent storage system, efficient connection between production and delivery



Manual assembly for quick response to small batches and samples

High quality and efficient product development

Rapid response capability from initial product concept to sample phase within two months, and we can quickly provide specialized, personalized and customized solutions according to the customer requirements.



More than 400 R&D engineers



First-class laboratory, providing performance data support



The world's top mold processing equipment to ensure mold quality